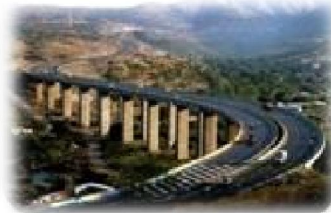


Welcome

- SMS Envocare Ltd.



Vision & Mission

Vision

- To contribute in our humble way to the gigantic task of nation building by diversified activities adhering to the highest traditions of quality and ethics thus creating lasting value for all the stakeholders.

Mission

- We shall offer the highest level of customer satisfaction by consistently delivering innovative solutions to customer needs using state-of-art technology, knowledge, skills and commitments.

THE SMS BRAND



Late Shri Shaktikumar M. Sancheti
Founder of the SMS Group

The color blue shows that we are strong and steadfast. Our ability to deliver against all odds, exhibited over decades, stands strong similar to structures we build.

The color grey matches the sophistication and professionalism that bring stability to our organization. If employee retention is a measure then we score 99%+ on it.

The gaps between the elements are a parallel for the openness of SMS to adapt, not randomly but by design, any new change or innovation brought inside the company or occurring outside in the dynamic business environment.

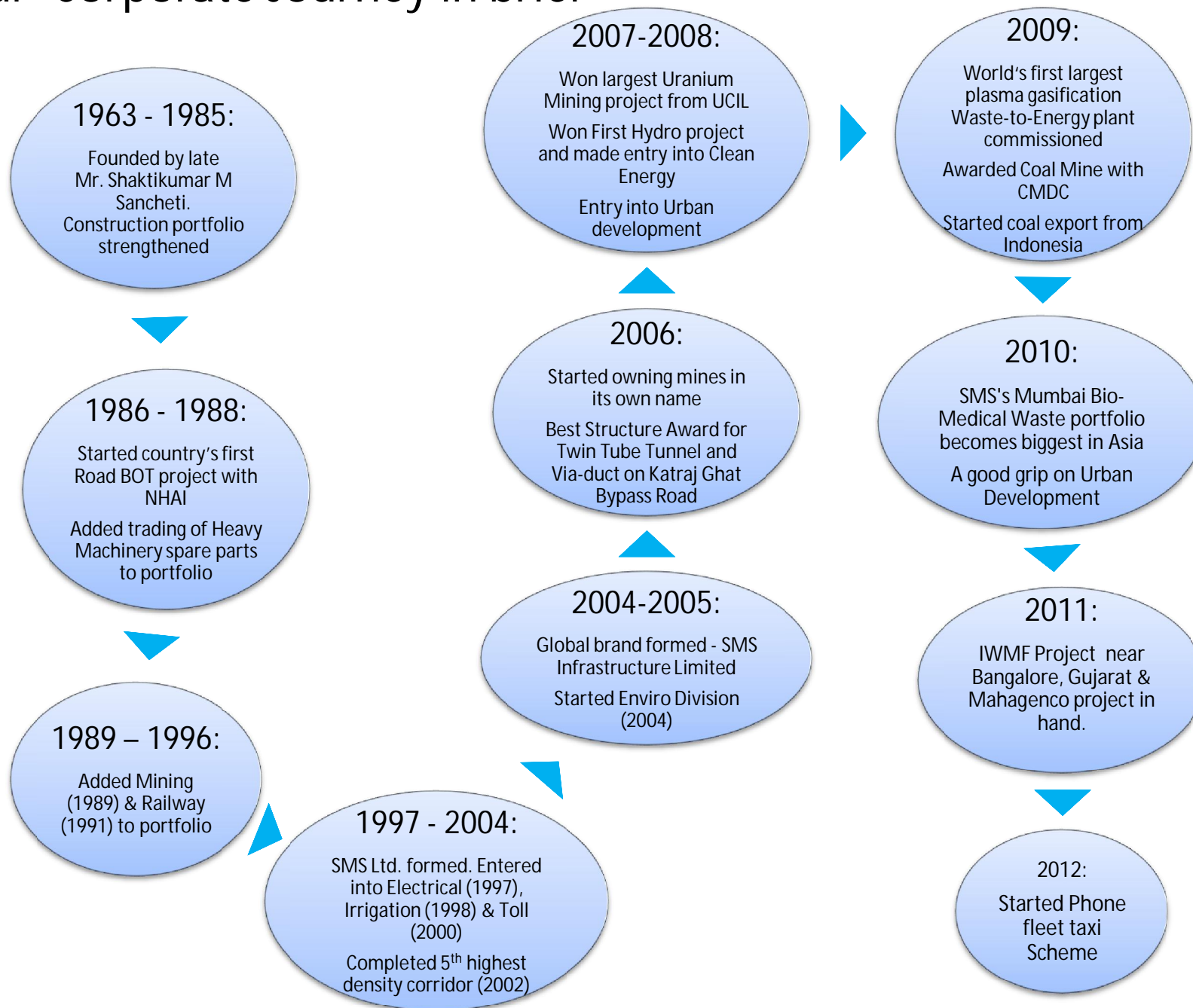
The circular gap at the center showcases the technology driven nature of SMS and implies room for continual improvement thus acting as our central driver for growth.

The inner circular bands of blue and grey increasing in size designate steady growth from small to big. The circular nature implies continuity in improvement efforts and forward outlook.

The outer circular bands of blue and grey further strengthen the belief - held by employees, customers, partners and other stakeholders - in the effective value system of SMS.



Our Corporate Journey in brief



SMS Today - Proven track record for 47+ years

- 1100+ crore in turnover
- 1800+ employees, 2800+ contracted labor force
- Major 53 Government & PSU clients
- Footprints in India, Singapore, Ethiopia & Indonesia
- Among the first 500 unlisted companies in India by turnover
- Focus Areas:



Roads



Irrigation



Railways



Tolls



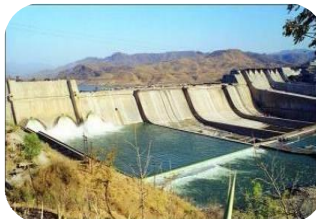
Roads O&M



Mining



Electrical



Enviro & Clean
Energy

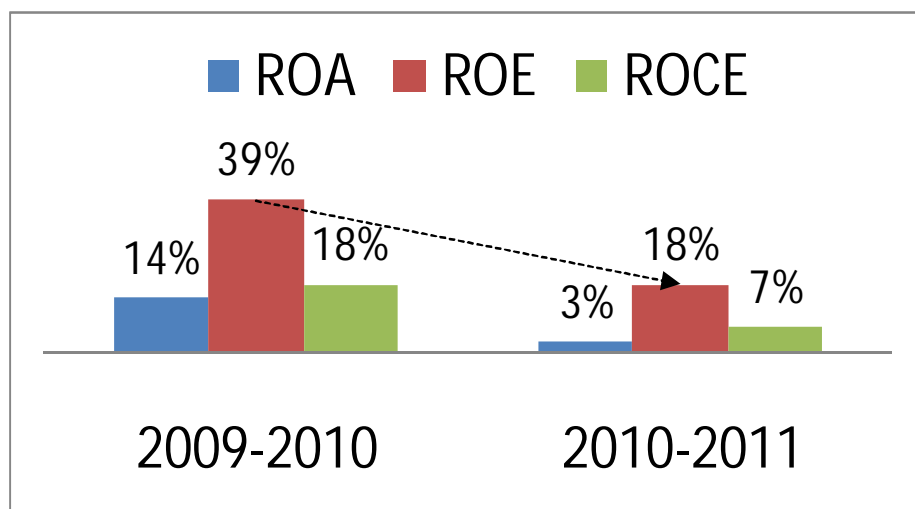
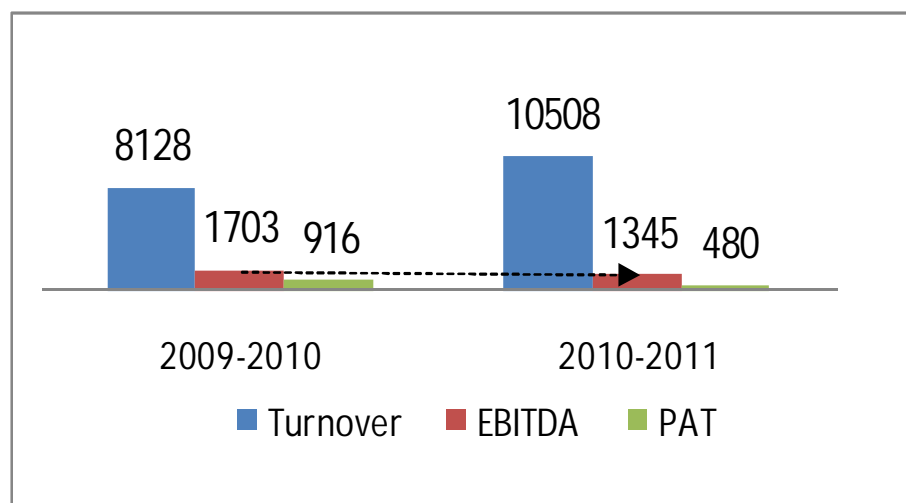


Urban
Development



Others

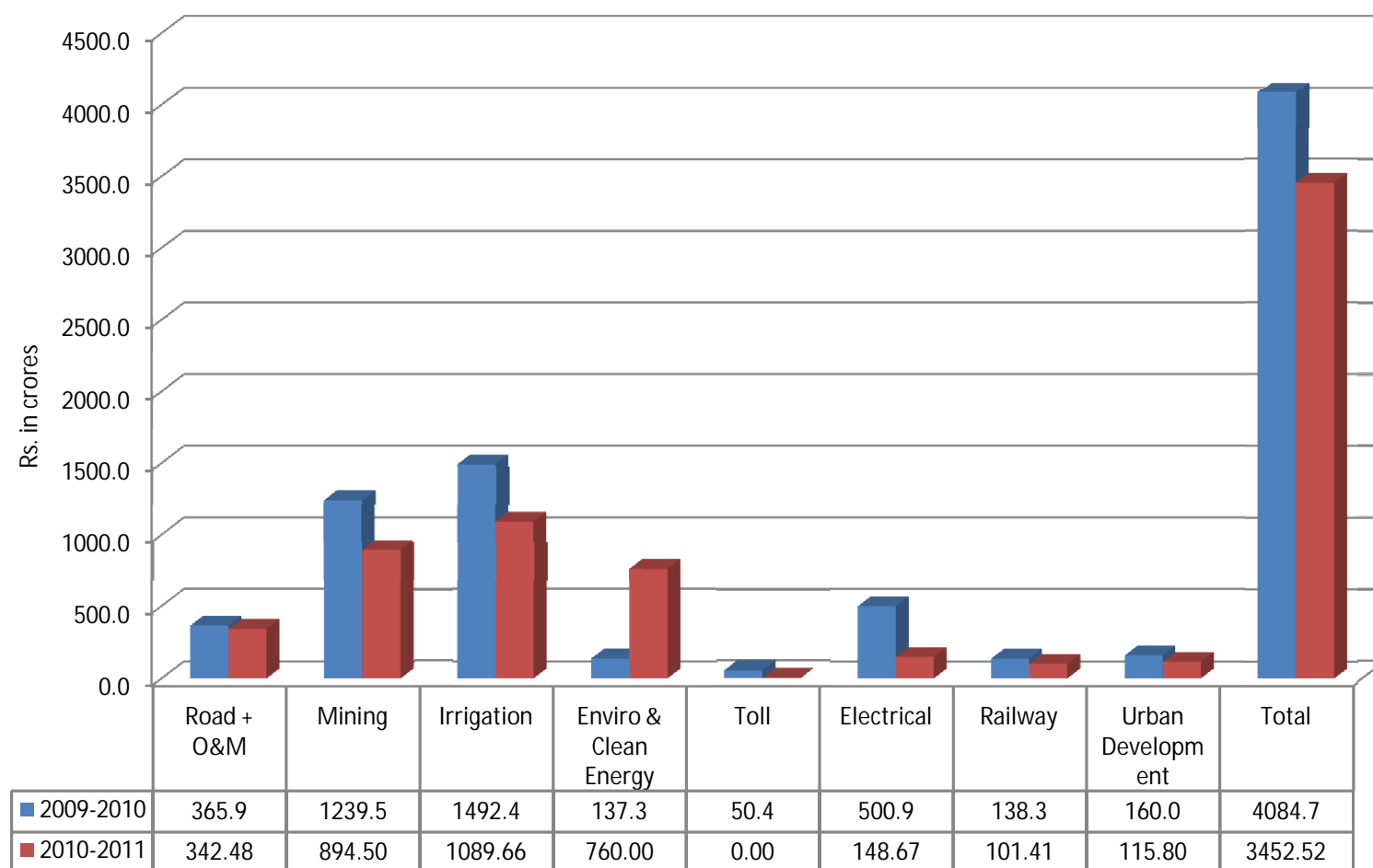
Financial Performance – SMSIL



SMSIL		
In INR Million	2009-2010	2010-2011
Net Annual Sales	8128.12	10508.49
EBITDA	1703.29	1345.12
Depreciation	185.96	218.71
Interest	480.07	540.73
PBT	1037.26	585.68
TAX	121.74	105.59
PAT	915.52	480.09
Total Assets	6399.80	8771.65
Total no of employees	1625	1780
Debt	2845.34	4417.83
Equity	95.37	95.37
Reserves	2237.53	2606.78
Capital Employed	5178.24	7119.98
Cash Equivalents	461.59	596.24
Enterprise Value	4716.65	6523.74
EPS (in Rs.)	96.00	61.40
Return on Assets	14.31%	3.11%
Return On Equity	39.24%	17.77%
Return on Capital Employed	17.68%	6.74%
Debt/Equity Ratio	1.22	1.63
EV/EBITDA	2.77	4.85
EV/Sales	0.58	0.62

Strong Order Book (Works in Hand)-

Long Sustained Cash Inflows



AWARDS AND ACHIEVEMENTS

- Awarded a coal mine with Q/IDC
- Commissioned the world's first largest Plasma Gasification Waste-to-Energy Plant
- The Mumbai Bio-medical waste portfolio run by SMS becomes biggest in Asia
- Awarded the largest Uranium Mining project from UCIL
- Awarded the best Structure Award for Twin Tube Tunnel and Viaduct on Katraj Ghat Bypass Road.

RARE RECOGNITION

- Unblemished track record since 1963 for Quality and Technology engineering capability
- Central India's largest infrastructure company
- Professionally managed Company featuring in first 500 unlisted companies of India
- LIMCA book of records for highest toll tax collection in a day
- Several National awards in its work areas

Environment & Clean Energy Division

Vision

To **Attain** and **Retain** No. 1 position in every **Environmental Business** Line wherever we are.

Mission

To Exceed the expectation of all stake holders:

- Employees
- Customers
- Government
- Lenders
- Suppliers
- Society
- Shareholders

Environement & Clean Energy Division - Today

- One of the prominent Environment Management companies in India
- Assest base - 4 Billion Plus (Rs. 400 Crs.)
- Workforce - 800+
- Operational Projects at
Delhi, Mumbai, Kolkata, Nagpur, Aurangabad, Lucknow, Kolhapur, Pune, Nasik

Focus Areas:



CHWTSDF



BMW



MSW



CETP



STP



Produced water



Desalination



Lake Remediation



Clean Energy



Consultancy

CHWTSDF

Key Projects - Completed

- CHWTSDF cum Waste to energy generation, Maharashtra Enviro Power Ltd , Ranjangaon, Pune.
- Vidharbha Enviro Protection Ltd, Nagpur

Key Project - Work In hand

- CHWTSDF at Shendra, Aurangabad

Key Services

- Hazardous waste ,Collection, Transportation, Analysis , Treatment Storage & Disposal & Management

Key Clients

- Many clients in Nagpur & Pune region including Volkswagen, TATA, Mahindra & Mahindra group, Raymonds, Bajaj Auto, Cipla Ltd., Cummins India group, Fiat India, Anand group, JCB manufacturing, General motors, Skoda motors, Hyundai Construction Equipment etc.

Key Recognitions

- SMS & Alter NRG Corporation Signed an agreement for Strategic Alliance to offer end to end solution for Plasma Gasification System along with balance of the plant equipment.
- Laboratory got Accredited by Ministry of Environment & Forest, Delhi



IWMF

Key Project - Work In hand

- Integrated Waste Management Facility near Bangalore, Gujarat

Key Services

- Will consist of the Hazardous waste Management, E-waste management facility, Bio-medical waste management facility, Facility for co-processing of hazardous waste and Waste oil Recovery.

Key Clients

- Many clients from Bengaluru city & / Karnataka Industrial Areas.



BMW

Key Projects - Completed

- Common Facility at Mumbai
- Common Facility at Delhi
- Common facility at Nasik
- Common Facility at Aurangabad

Key Project - Work In hand

- Common Facility at Lucknow, Raipur, Wasai-virar

Key Services

- Collection ,Transportation ,Reception , Analysis , Treatment & Disposal of Bio-Medical Waste

Key Clients

- JJ Hospitals , Hinduja, TATA etc. almost 5000+ health care units

Key Recognitions

- The Mumbai facility is the biggest facility in Asia

Key Project - In Process

- Wasai – Virar,
- Raipur



MSW

Key Project - Completed

- 1,60,000MT Landfill at Ranjangaon, Pune
- 60,000 MT landfill at Butibori, Nagpur

Key Project - Work In hand

- 1.4 million MT Landfill at Kolkata

Key Services

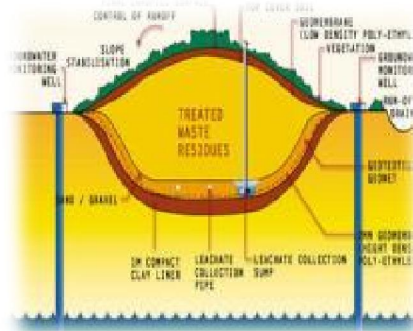
- Design , Construction with operations & Maintenance of landfills
- Reception & Disposal of Waste in to landfill with monitoring of environment parameter, leachate collection, treatment & disposal

Key Clients

- Kolkata Metro Development Authority, Morarjee Brahmana Ltd., ATSL Ltd.
TATA, Ispat, Bajaj, Garware, Raymonds , almost 1000+ industries in Maharashtra state

Key Recognitions

- Developed Valley landfill using natural topography, first of its kind in India



CETP

Key Projects - Completed

- 5 MLD CETP at Butibori, Nagpur
- 10 MLD CETP at Kagal, Kolhapur
- 10 MLD CETP at Waluj, Aurangabad

Key Projects - Work In hand

- 3-4 Bids under process
- 5MLD Expansion of CETP, Butibori, Nagpur

Key Services

- Reception , Analysis , Treatment & Disposal of waste water generated from industrial area

Key Clients

- Many clients in Nagpur & Pune region including Indorama Synthetic, Morarjee Brahmana Ltd., ATSL Ltd. TATA, Ispat, Bajaj, Garware, Raymonds etc. .



STP's

Key Projects- In hand

- 130 MLD Mahagenco Project (bidding done; SMS at L1)
- 110 MLD Nagpur Municipal Corporation Project (bidding done; SMS at L1)

Key Services

- Erection Commissioning of Sewage Treatment Plant and O & M

Prospective Clients

- Mahagenco & NMC



Produced water

Key Projects - In Hand

- ONGC , Assam - 3 Tenders in process
- Consortium partners : LAKSEL, Singapore and Zen Marketing , Kolkata
- Budget : 190 Crs. (LSTK – 145 Crs., 7 yrs O & M : 50 Crs)
- ONGC, Mehsana – Modification of 2000M³/d ETP, (bidding done; SMS at L1)

Prospective Clients

- ONGC : Offshore / Onshore
- Oil India Ltd.
- Petro –Chemicals & Refineries
- Reliance Petroleum
- Essar Refinery

Key Recognitions

- Exposure to advanced produced water treatment technologies involving Nut-shell Filters, Induced Gas Flootation, Ultra Filtration.



Lake Remediation

Prospective projects

- Naya Raipur, Raipur, Bangalore, Surat, KDMC

Key Services

- Preparation of DPRs for lake remediation, survey of watershed, sampling and analyses of lake water and sediments from lake bed, dredging of lake beds, removal of aquatic weeds / plants, checking ingress of untreated effluents / sewerage, strengthening (de-silting) of feeder channels, strengthening of bunds, mobilizing public opinion, ensuring aeration of lake water, monitoring water quality

Prospective Clients

- Naya Raipur Development Authority
- Lake Development Authority, Bangalore
- National Lake Development Authority, New Delhi

Strengths

- ETP experience, earthwork experience of teh Group, collaboration with Solar Bee most energy efficient aeration system, tying up with Tandon & Associates for lake remediation DPRs



Clean Energy Hydro

Key Projects - Work In hand

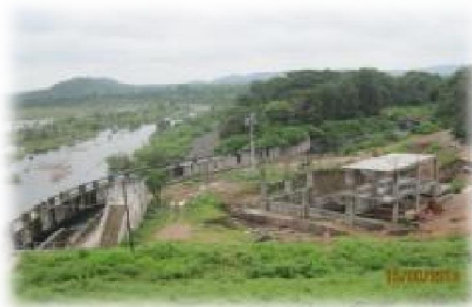
- RBC-Equipment Received at Site
- RBC-Erection at Site in Progress Completion Planned in march 2011
- LBC-E & M Equipment ordered, design work in progress
- LBC-Project Completion planned by Sept 2012

Key Services

- Generation of Energy from renewable sources – Small Hydro Power Projects

Key Clients

- Electricity Consumers requiring fulfillment of usage obligation from renewable resources
- Water Resource Department



Consultancy

Key Project - Completed

- Performance Audit: John Deere India Pvt Ltd., Endurance Technologies Pvt. Ltd., Chakan and Aurangabad
- Consent to Operate: Paranjape Auto Cast., APS Paints, Tacco Composite Ltd., Endurance Technologies Ltd.
- ETP: Leachate Collection, Mumbai
- STP: Endurance Technologies Ltd.
- Resource Management: Volkswagen India Ltd., General Motors Ltd
- ISO Training: Piaggio Ltd.

Key Projects - Work In hand

- Consent Renewal: DTL Ancillaries, John Deere India Ltd, Thai Summit Ltd, Suzlon Generators Ltd. APS Paints Ltd.
- Performance Audit
- ETP: Jamil Steel., Military Hospital, Pune, TATA projects Ltd., Bhaskar group, Aditya Birla group (Nagpur region), Ordinance Factory (Bhandara).
- STP: Endurance Technologies Ltd.
- EIA: Marvel Realtors & Developers Ltd, Lupin Laboratories

Key Services

- Environment Monitoring, Consent to Operate and Establishment, Erection, Commissioning of ETP / STP, Performance Audit, Safety Training, Resource Management

Key Clients

- All types of Industries, Construction Projects, Government Establishment

Key Recognitions

- Laboratory recognized by MoEF, Laboratory accredited by NABL(In process), Experienced & Qualified Team



Our Partners – JVs and Technology Partnership

Enviro & Clean Energy

- ALT NRG (for Plasma Gasification for Waste-to-Energy)
- Zen Marketing
- Ion exchange
- Watergrace
- IBR Canada (for In-Vessel Composting).
- SFC Group (C-Tech.)

Corporate Social Responsibility

Towards our employees

- Employs local work force around project site
- Provides education, healthcare & capacity building training to its workforce>

Towards our project's local region

- Wider medical facilities to villages
- Tree plantation (over 3 lac trees planted, 1 lac trees are 6+ years now)
- Water and Energy conservation rallies through SAVE WE

Towards broader society and Nation

- Child Adoption For Education (CAFÉ)
- Promoting 7 schools (Meerabai Sancheti Dharampeth Kanya Shala having 650 girls students)
- M. K. H. Sancheti School at Nagpur, with over 800 students

Towards Humanity

- Child Adoption for Rehabilitation & Education (CARE).
- exclusively for HIV positive (AIDS) children of age between 5 to 13



www.SaveWE.com

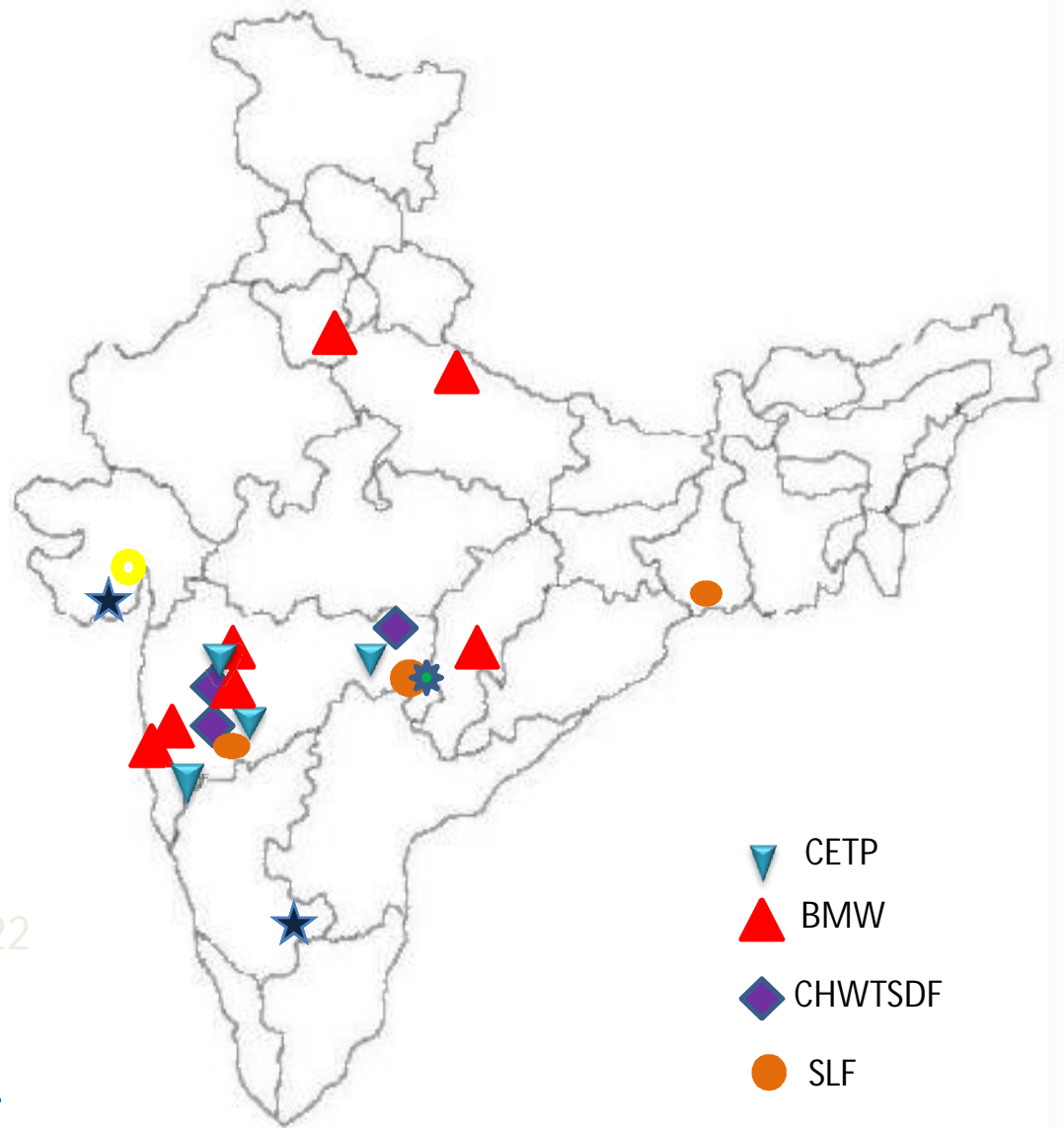


Thank you

20, IT Park, Parsodi, Nagpur-440022

Email – info@smsenvocare.co.in

Website – www.smsenvocare.co.in



-  CETP
-  BMW
-  CHWTSDF
-  SLF
-  IWMF
-  STP
-  Produced